



BRUNEL CRESCENT

Town Centre, Swindon, Wilts SN2 1FE


PRIMARY
HOMES & LETTINGS

Brunel Crescent, Town Centre, Swindon SN2 1FE

- AVAILABLE NOW
- Two DOUBLE Bedroom Second Floor Apartment
- Communal Lift Service
- Fully Furnished
- Allocated Parking
- Gas Central Heating
- Open Plan Lounge/Diner/Kitchen
- Bathroom & En-Suite
- EPC RATING - C
- Excellent Location

£1,150 PCM



***** AVAILABLE NOW ***** Primary Homes & Lettings are pleased to offer this spacious two DOUBLE bedroom apartment situated in Brunel Crescent within walking distance to the train station and town centre. The accommodation comprises of open plan lounge/diner/kitchen, master bedroom (with en-suite shower) one further bedroom and bathroom. The property also benefits from allocated parking, gas central heating and communal lift service. This property is offered fully furnished. Viewing is highly recommended.

Tenant Information

Length of Tenancy: Long term let with initial tenancy agreement of 6 months

Council: Swindon Borough Council

Tax Band: C

Sizes

Please note, all measurements of room sizes given are not guaranteed and figures are for guidance only.

Viewings

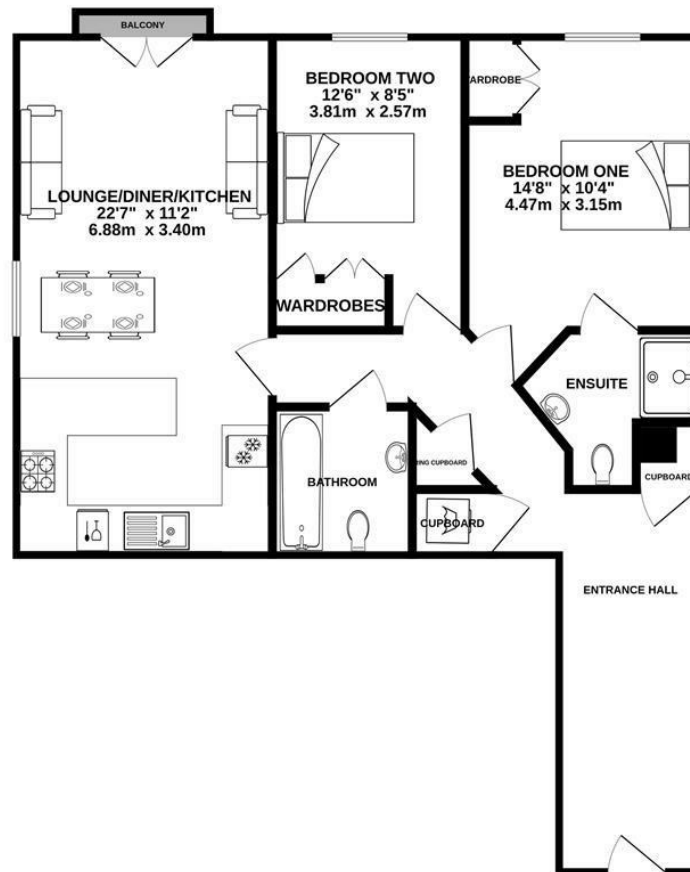
Strictly via our Swindon office telephone (01793) 641641.

Photographs

Please note that photos were taken prior to the current tenants moving into the property.



SECOND FLOOR
758 sq.ft. (70.4 sq.m.) approx.



TOTAL FLOOR AREA: 758 sq.ft. (70.4 sq.m.) approx.

Whilst every attempt has been made to ensure the accuracy of the floorplan contained here, measurements of doors, windows, rooms and any other items are approximate and no responsibility is taken for any error, omission or mis-statement. This plan is for illustrative purposes only and should be used as such by any prospective purchaser. The services, systems and appliances shown have not been tested and no guarantee as to their operability or efficiency can be given.
Made with Metropix ©2023

01793 641641

10 Commercial Road, Swindon, SN1 5PL

info@primaryhomesandlettings.co.uk

PRIMARY
HOMES & LETTINGS